

PERI Services

Formwork Assembly



Customised assembly from simple panel cuts to ready-to-use 3D elements

- Formwork assembled as required
- In the required quality
- In the required quantity
- Delivery at the required time

The PERI assembly service

Complete solutions from one source



Customised slab tables for beams and box-outs for the construction of **BBI Berlin Brandenburg International Airport, Berlin.**



Planning
3D formwork section planning with the PERI CAD software program on the PC.



Trimming operations in the assembly hall
Trained specialist staff at the PERI assembly facility.



A wide range of special formwork is required because architecture is becoming increasingly more demanding in both quality and geometry.

In order to fulfil these requirements, we manufacture the formwork you require made-to-measure and according to quality and quantity.

- Customised panel cutting
- Production and delivery of reveals and box-outs according to individual requirements (form, formlining, desired required amount of use and on-site material requirements).

- Standard preparation of complete formwork elements matches to suit the requirements of the structure and your individual construction planning.
- Supervisor available on-site with the aim of qualifying personnel in the handling of PERI products in order to increase efficiency and safety levels.
- Dismantling of formwork elements used at a fixed price. For lessening the workload of your personnel as well as reducing crane requirements and storage space.



Transportation
Regulation-compliant loading and safe transport to the construction site.



Final assembly on the jobsite
Final assembly of large formwork projects is carried out on-site.



Site supervision
Briefing construction site personnel by the professional PERI supervisor.

Flexible production processes and specialists realise individual customer requirements

PERI services	Your benefits
<ul style="list-style-type: none"> ■ Experienced sales engineers help to appropriately define the project-related requirements. 	<ul style="list-style-type: none"> ■ Selection of the right formwork concept.
<ul style="list-style-type: none"> ■ Fixed price offer with clearly defined scope of service. ■ Ready-to-use elements in accordance with the agreed offer. ■ Efficient dismantling work for returned formwork units after use. 	<ul style="list-style-type: none"> ■ Clear cost transparency. ■ Reliable calculation process.
<ul style="list-style-type: none"> ■ On-going coordination of manufacturing capacities in the PERI assembly centres throughout the whole of Germany. ■ Reliable adherence to fixed delivery dates. 	<ul style="list-style-type: none"> ■ Rapid availability, also for large quantities of materials. ■ Adherence to schedules. ■ Smooth construction progress without delays.
<ul style="list-style-type: none"> ■ Pre-assembly independent of the construction site, clean and weather-independent working conditions in state-of-the-art workshops. ■ Efficient production processes using special machines with appropriate equipment and tools. ■ Technically-trained assembly specialists who are also qualified craftsmen. 	<ul style="list-style-type: none"> ■ No premises or assembly areas with machines on the construction site are necessary. ■ No on-site allocation of personnel and eases the workload of the site management. ■ Avoidance of uneconomical "improvisations" due to lack of equipment and unavailability of materials on the construction site. ■ Required dimensional accuracy and high quality of workmanship.

Defining the requirements

PERI sales engineer and the customer define the individual requirements.



NC programming

Based on completed 3D formwork unit planning on the computer.



Assembly of customised formwork
Office building in Meisenheim



CNC machine

Prefabrication of timber formers on the CNC machine.



Cutting of timber former

CNC-supported cutting of timber formers and other individual panels.



Delivery

On-schedule deliveries "just-in-time"



Accurately-fitting soffit arches for the “Ice Cream Cone” roof

Customised tables for the “Ice Cream Cone” roof from the PERI assembly service.



For this business complex in Lübeck, the roof construction comprises of horizontally-positioned shell halves which resemble ice cream cones, the openings of which alternate down the length of the building. The trapezoidal-shaped ground plan of approx. 70 x 25 m emphasizes the dissimilarity of the individual arches.

The PERI pre-assembly specialists in Hamburg put together 56 precision-made formwork elements whereby a minimum of filler areas had to be taken into consideration. Ready-to-assemble delivery to the construction site followed.

Project

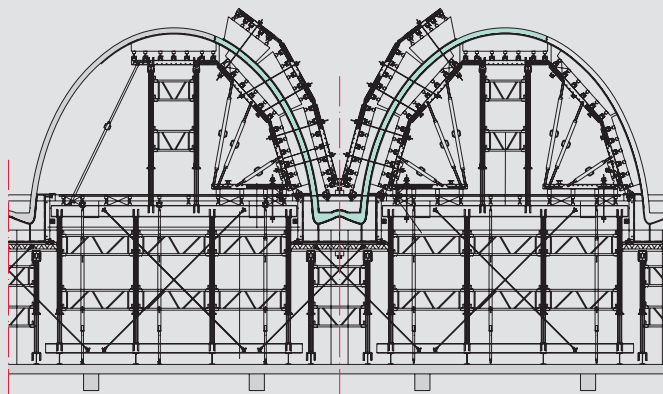
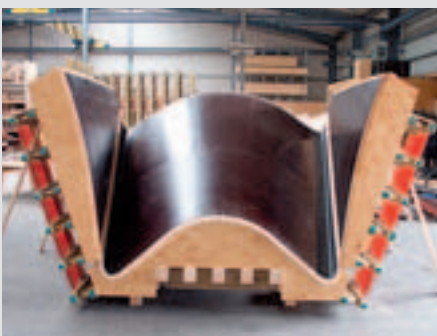
Office and business building, Lübeck

Contractor

Aug. Prien Bauunternehmung GmbH & Co. KG, Hamburg

Cross-section: extract taken from the PERI formwork planning.

Assembly of 56 ready-to-use elements at the PERI assembly centre in Hamburg.



Customised formwork with 3D units in large-scale operations



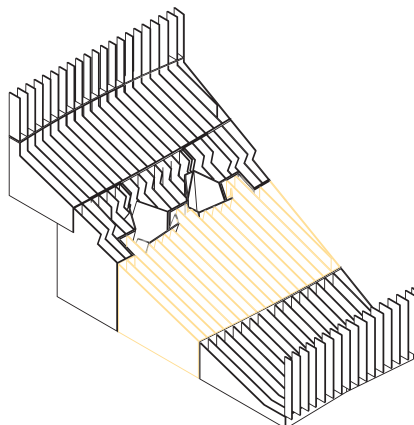
The basis for the elaborate production of the 3D formwork units was formed by VARIO basic elements. The large quantities of materials and the short construction time required a high level of PERI commitment: in peak times, there were around 50 formwork carpenters working simultaneously at four different locations implementing the planning of up to 30 design engineers in more than 20,000 hours.



A very impressive construction site and unrivalled customised formwork technology.

The 3D formwork units were constructed by the PERI assembly service on VARIO standard elements.

The result: sharp edges, high quality surface finishes and well-arranged tie positions.



3D formwork sections and planning of the 3D formwork units for the Mythos ramp.

Project

Mercedes-Benz Museum, Stuttgart

Contractors

Ed. Züblin AG, Stuttgart und

Wolff & Müller GmbH & Co. KG, Stuttgart

Customised formwork at the highest level



With the made-to-measure prefabricated formwork elements, the construction crew could achieve maximum form precision and surface finish.



Assembly of the customised elements for use without ties.

Project

Galileo Satellite Control Centre,
Oberpfaffenhofen

Contractor

Dechant Hoch- und Ingenieurbau
GmbH & Co.KG, Weismain

This very unusual architectural concrete structure features three inclined reinforced concrete towers which carry the 9 m high hall slab within the complex designed external walls. These towers symbolize oversized telescopes which observe satellites in space. For accurate and cost-effective construction,

PERI developed customised formwork elements on basis of the VARIO GT 24 system. PERI delivered pre-assembled and ready-to-use 3D formwork directly to the construction site in order to achieve the required high form and surface qualities from the first use onwards in spite of the very tight schedule.

For the formlining, large-sized PERI Fin-Ply Maxi reduced panel joints to a minimum.



Customised formwork using components from the VARIOKIT construction kit



On the BAB A96 Lindau – Munich motorway near Gebrazhofen, an animal overpass was constructed. Both tunnel tubes were realised with a 9.30 m long fomwork carriage comprised of elements from the VARIOKIT construction kit.

Planning and assembly of the standard elements was carried out at the Weisenhorn plant. 3D customised components were also prefabricated there for the circular-shaped portal area which featured a tapering of the walls.

Rentable standard system components from the VARIOKIT programme combined with specially-produced customised elements.

Project

Grünbrücke BAB A 96, Gebrazhofen

Contractor

Ed. Züblin AG, Bereich Friedrichshafen

A total of three tunnel tubes form the Gebrazhofen animal overpass. The structure ensures that animals living in the wild can cross traffic routes unhindered and that their habitats are connected.



VARIO GT 24 under high pressure



Up to 14.0 m high VARIO GT 24 large elements designed for 150 kN/m² fresh concrete pressure.

With this project, SCC self-compacting concreting was used in order to fulfil the high architectural concrete requirements. Therefore, the formwork had to accommodate 150 kN/m² fresh concrete pressure and this with formwork heights up to 14.0 m.

For the completion of the curved areas with the twisted surfaces, PERI delivered pre-assembled 3D formwork ele-

ments on basis of rentable VARIO standard elements.

In addition, a three-dimensional CAD building model was created. As a result, the form-giving formwork units could be constructed at the PERI assembly hall. Due to the high dimensional accuracy, these customised elements could be easily joined together and positioned on the jobsite.



Project

National Museum for Contemporary Art MAXXI, Rome, Italy

Contractor

ARGE MAXXI 2006

Model of the completed structure.

Accurately-constructed pier heads and in the best quality



Assembly of the special elements at the Weissenhorn plant.



Exact and with the required board structure – one of altogether 16 pier heads after completion.

Project

Saaletal Bridge BAB A71, Hollstadt

Contractor

J.G. Müller mbH, Wetzlar



PERI delivered the pier head formwork pre-assembled to the construction site. Designed by PERI engineers at the technical office and put together by a specialist assembly team at the company's headquarters in Weissenhorn, this cost-efficient solution allowed very accurate pier head construction to take place.

The pier head formwork consisted of two bulkheads and two longitudinal elements. Forming timber, vertically-positioned to the lattice girders, were an advantage when assembling the elements (without stiffeners) and for transferring the loads (less bracing). 10 cm wide strips formed the rough-sawn plywood covering which was cut according to specifications and then positioned in order to provide the required concrete surface finish.

Pier head formwork with climbing scaffold and concreting platforms ready for casting.

Ready-to-use elements delivered directly to the construction site

Project

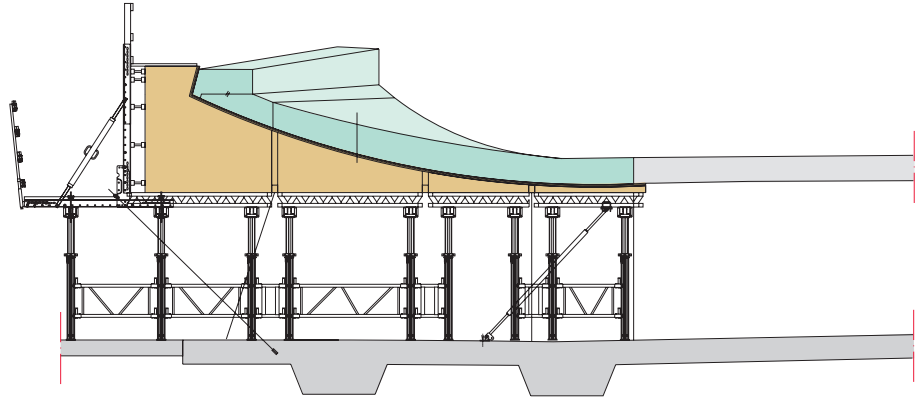
Aesculap Pedestrian Subway, Tuttlingen, Germany

Contractor

Heim GmbH & Co. KG, Tuttlingen



The pre-assembly of the 3D formwork elements in transportable dimensions was carried out by specialists from the PERI assembly service team.



The design principle of the PERI 3D formwork consists of three-dimensional formwork units and statically supporting basic elements.

In Tuttlingen, up to 12 m high retaining walls and twisted surfaces in the wall and slab areas were constructed for this pedestrian subway.

On the basis of a 3D model created by the engineering office, PERI developed a formwork construction consisting of load-bearing standard elements and form-giving 3D formwork units.

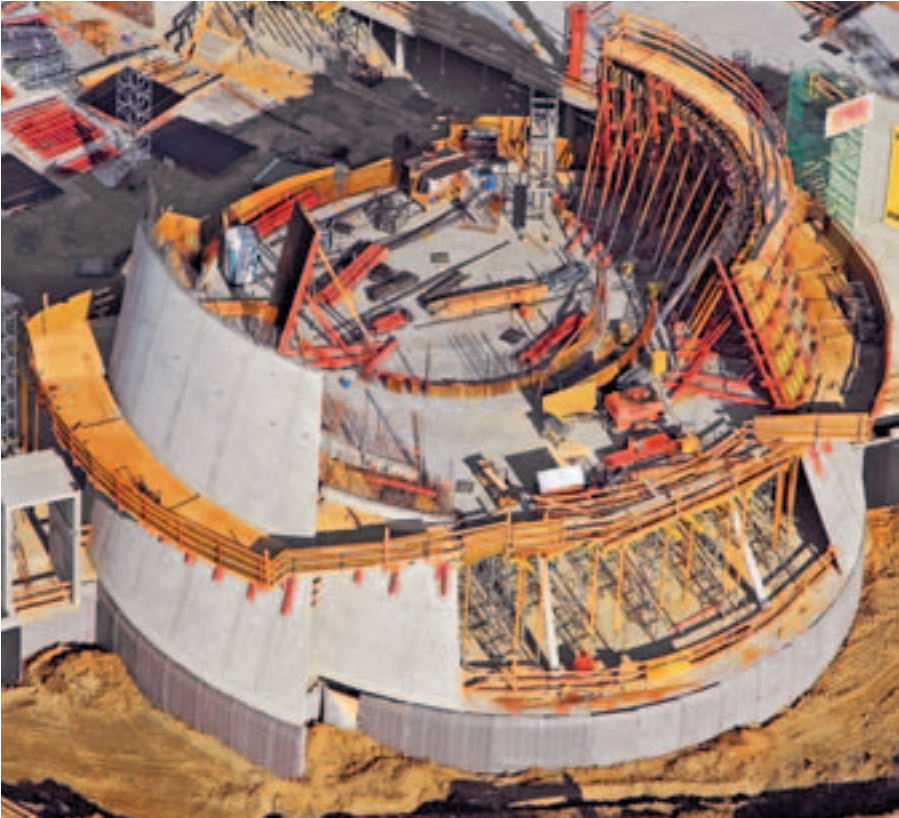
The rentable standard elements were

mostly comprised of the VARIO GT 24 girder wall formwork system.

For ensuring safe transfer of loads SLS heavy-duty spindles and MULTIPROP slab props as load towers were used. Taking into consideration the maximum transportation dimensions, PERI engineers designed honeycomb-like geometrical bodies. In addition, a geometry

database was set up which served for the construction of individual timber formers and assembly of formwork units at the PERI assembly centre. On the construction site, the pre-assembled formwork elements could be joined together and positioned with millimetre precision.

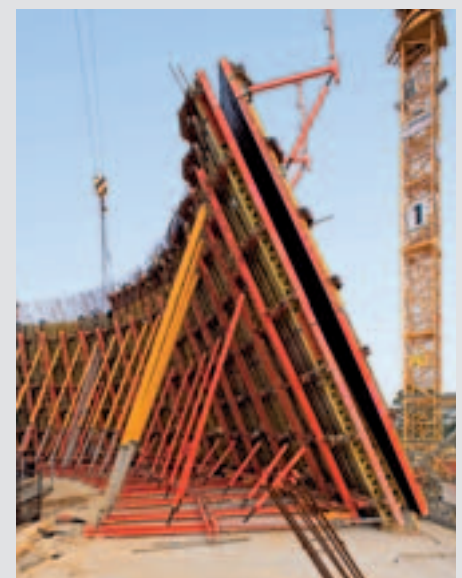
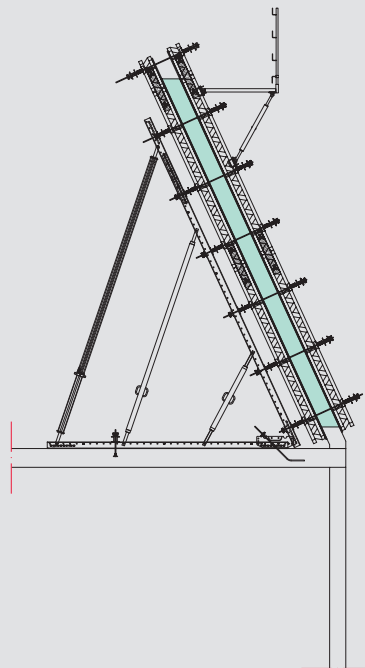




The ground plan dimensions of the Mercedes-Benz Center in Milan measure an impressive 183 x 126 m. With its broad equipment and system programme, PERI was able to provide the construction crew with the optimal solution in each case for the wide range of tasks. With this, a high quality of workmanship could be achieved as well as cost-effectively fulfilling all safety-related requirements in spite of the extremely tight construction schedule.

Project
Mercedes-Benz Center, Milan, Italy
Contractor
Ed. Züblin AG, Stuttgart

PERI RUNDFLEX could be installed on site for every construction stage according to the individually curved form. The required radii templates as well as filler elements were produced in advance by PERI on special CNC wood processing equipment.



The special building structure could be realised by the construction crew using mostly serial components taken from the PERI system equipment programme.



01 PERI GmbH
 Rudolf-Diesel-Strasse
 89264 Weissenhorn
 info@peri.com
 www.peri.com



02 France
 PERI S.A.S.
 77109 Meaux Cedex
 peri.sas@peri.fr
 www.peri.fr

03 Switzerland
 PERI AG
 8472 Ohringen
 info@peri.ch
 www.peri.ch

04 Spain
 PERI S.A.
 28110 Algete - Madrid
 info@peri.es
 www.peri.es

05 Belgium/Luxembourg
 N.V. PERI S.A.
 1840 Londerzeel
 info@peri.be
 www.peri.be

06 Netherlands
 PERI B.V.
 5480 AH-Schijndel
 info@peri.nl
 www.peri.nl

07 USA
 PERI Formwork Systems, Inc.
 Elkridge, MD 21075
 info@peri-usa.com
 www.peri-usa.com

08 Indonesia
 PT Beton Perkasa Wijaksana
 Jakarta 10210
 bpw@betonperkasa.com
 www.peri.com

09 Italy
 PERI S.p.A.
 20060 Basiano
 info@peri.it
 www.peri.it

10 Japan
 PERI Japan K.K.
 Tokyo 103-0015
 info@perijapan.jp
 www.perijapan.jp

11 United Kingdom/Ireland
 PERI Ltd.
 Rugby, CV23 0AN
 info@peri.ltd.uk
 www.peri.ltd.uk

12 Turkey
 PERI Kalıp ve İskeleleri
 Esenyurt / İstanbul 34510
 info@peri.com.tr
 www.peri.com.tr

13 Hungary
 PERI Kft.
 1181 Budapest
 info@peri.hu
 www.peri.hu

14 Malaysia
 PERI Formwork Malaysia
 Sdn. Bhd.
 43300 Seri Kembangan,
 Selangor Darul Ehsan
 info@perimalaysia.com
 www.perimalaysia.com

15 Singapore
 PERI ASIA Pte. Ltd
 Singapore 387355
 pha@periasia.com
 www.periasia.com

16 Austria
 PERI Ges.mbh
 3134 Nußdorf ob der Traisen
 office@peri.at
 www.peri.at

17 Czech Republic
 PERI spol. s r.o.
 252 42 Jesenice u Prahy
 info@peri.cz
 www.peri.cz

18 Denmark
 PERI Danmark A/S
 2670 Greve
 peri@peri.dk
 www.peri.dk

19 Finland
 PERI Suomi Ltd. Oy
 05460 Hyvinkää
 info@perisuomi.fi
 www.perisuomi.fi

20 Norway
 PERI Norge AS
 3036 Drammen
 info@peri.no
 www.peri.no

21 Poland
 PERI Polska Sp. z o.o.
 05-860 Płochocin
 info@peri.pl.pl
 www.peri.pl.pl

22 Sweden
 PERIform Sverige AB
 30013 Halmstad
 peri@periform.se
 www.periform.se

23 Korea
 PERI (Korea) Ltd.
 Seoul 135-080
 info@perikorea.com
 www.perikorea.com

24 Portugal
 PERIcofragens Lda
 2790-326 Queijas
 info@peri.pt
 www.peri.pt

25 Argentina
 PERI S.A.
 B1625GPA Escobar – Bs. As.
 info@peri.com.ar
 www.peri.com.ar

26 Brazil
 PERI Formas e
 Escoramentos Ltda.
 Vargem Grande Paulista
 São Paulo
 info@peribrasil.com.br
 www.peribrasil.com.br

27 Chile
 PERI Chile Ltda.
 Colina, Santiago de Chile
 peri.chile@peri.cl
 www.peri.cl

28 Romania
 PERI România SRL
 077015 Balotești
 info@peri.ro
 www.peri.ro

29 Slovenia
 PERI Slovenien
 2000 Maribor
 peri.slo@triera.net
 www.peri.com

30 Slovakia
 PERI spol. s r.o.
 903 01 Senec
 info@peri.sk
 www.peri.sk

31 Australia
 PERI Australia Pty. Ltd.
 Glendenning NSW 2761
 info@periaus.com.au
 www.periaus.com.au

32 Estonia
 PERI AS
 76406 Saku vald
 Harjumaa
 peri@peri.ee
 www.peri.ee

33 Greece
 PERI Hellas Ltd.
 194 00 Koropi
 info@perihellas.gr
 www.perihellas.gr

34 Latvia
 PERI SIA
 2118 Salaspils novads,
 Rigas rajons
 info@peri-latvija.lv
 www.peri-latvija.lv

35 United Arab Emirates
 PERI (L.L.C.)
 Dubai
 perillc@perime.com
 www.perime.com



- 36 Canada**
PERI Formwork Systems, Inc.
Bolton, ON – L7E 1K1
info@peri.ca
www.peri.ca
- 37 Lebanon**
Lebanon Representative Office
Jdeideh
lebanon@peri.de
www.peri.de
- 38 Lithuania**
PERI UAB
02300 Vilnius
info@peri.lt
www.peri.lt
- 39 Morocco**
PERI S.A.
Tanger
peri25@menara.ma
www.peri.com
- 40 Israel**
PERI Formwork
Engineering Ltd
Petach Tikva, 49002
info@peri.co.il
www.peri.co.il
- 41 Bulgaria**
PERI Bulgaria EOOD
1839 Sofia
peri.bulgaria@peri.bg
www.peri.bg
- 42 Iceland**
Armar ehf.
220 Hafnarfjörður
www.armor.is
- 43 Kazakhstan**
TOO PERI Kazakhstan
050059 Almaty
peri@peri.kz
www.peri.kz
- 44 Russian Federation**
OOO PERI
142407, Noginsk District
moscow@peri.ru
www.peri.ru
- 45 South Africa**
Wiehahn Formwork and
Scaffolding (Pty) Ltd.
7600 Stellenbosch
info@wiehahn.co.za
www.wiehahn.co.za
- 46 Ukraine**
TOW PERI Ukraina
07400 Brovary
peri@peri.ua
www.peri.ua
- 47 Egypt**
Egypt Branch Office
11361 Heliopolis / Cairo
info@peri.com.eg
www.peri.com.eg
- 48 Serbia**
PERI Oplate d.o.o.
11272 Dobanovci
office@peri.rs
www.peri.rs
- 49 Mexico**
PERI Cimbras y Andamios,
S.A. de C.V.
Estado de México,
info@peri.com.mx
www.peri.com.mx
- 50 Azerbaijan**
PERI Kalıp ve İskeleleri
Baku
peribaku@peri.com.tr
www.peri.com.tr
- 51 Turkmenistan**
PERI Kalıp ve İskeleleri
Aşgabat
ahmet.kadioglu@peri.com.tr
www.peri.com.tr
- 52 Belorussia**
PERI Belarus
220100 Minsk
info@peri.by
www.peri.by
- 53 Croatia**
PERI oplate i skele d.o.o.
10 250 Donji Stupnik/
Zagreb
info@peri.com.hr
www.peri.com.hr
- 54 Iran**
PERI GmbH
Iran Branch Office
Tehran
info@peri.ir
www.peri.ir
- 55 India**
PERI (India) Pvt Ltd
Mumbai – 400064
info@peri.in
www.peri.in
- 56 Jordan**
PERI GmbH - Jordan
11947 Amman
jordan@peri.com
www.peri.com
- 57 Kuwait**
PERI Kuwait
13011 Kuwait
kuwait@peri.com
www.peri.com
- 58 Saudi Arabia**
PERI Engineering
Division of Jamjoom
Consult Saudi Arabia
21463 Jeddah
info@peri.com.sa
www.peri.com.sa
- 59 Qatar**
PERI Qatar LLC
P.O.Box: 31295 - Doha
info@periqatar.com
www.periqatar.com
- 60 Algeria**
Société PERI S.A.S.
Kouba - Alger
peri.alger@peri.fr
www.peri.fr
- 61 Albania**
PERI Sh.p.k.
Tirane
erti.hasanaj@peri.com.tr
www.peri.com.tr
- 62 Peru**
PERI Peruana SAC
Villa El Salvador, Lima
contacto@peri.com.pe
www.peri.com.pe
- 63 Panama**
PERI Panama Inc.
0832-00155 Panama City
info@peri.com.pa
www.peri.com.pa
- 64 Angola**
PERIcofragens, Lda.
Luanda
renato.portugal@peri.pt
www.peri.pt
- 65 Nigeria**
Heights Access Nigeria Ltd.
Victoria Island, Lagos
info@heightsaccessng.com
www.heightsaccessng.com
- 66 Oman**
PERI (L.L.C.)
Muscat
perimct@perime.com
www.perime.com

The optimal System for every Project and every Requirements



Wall Formwork



Column Formwork



Slab Formwork



Climbing Systems



Tunnel Formwork



Bridge Formwork



Shoring Systems



Construction Scaffold



Facade Scaffold



Industrial Scaffold



Access



Protection Scaffold



System-Independent Accessories



Services



PERI GmbH
Formwork Scaffolding Engineering
 P.O. Box 1264
 89259 Weissenhorn
 Germany
 Tel. +49 (0)7309.950-0
 Fax +49 (0)7309.951-0
 info@peri.com
 www.peri.com